

THE
NORTHERN
SCHOOL
OF ART

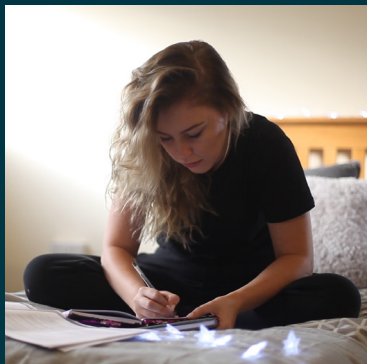
Student Accommodation

Home from home

   /TheNorthernArt

northernart.ac.uk

THE NORTHERN SCHOOL OF ART



Student accommodation not only offers great value for money and savings to be had with all-inclusive bills and free wifi, it also provides a fantastic opportunity to meet new friends from across courses.

At The Northern School of Art there are a variety of options to choose from to meet different student needs, budgets and preferences. All our student accommodation offers spacious living with a comprehensive package of facilities to make life that little bit easier when moving away from home.

All accommodation has the following benefits:

- within walking distance of the campus
- handy for local amenities
- close to local and national travel links
- safe and secure
- 24-hour emergency support
- all electricity and heating included within the rent
- free internet access
- laundry facilities and costs included
- cleaner for all communal areas

Communal living is a great start to the university-level experience, there's plenty of space to socialise or hide away to concentrate on work. With an all-inclusive rent there's no need to worry about any additional running costs such as laundry or bills. There's always someone on hand to ask advice from or get support. It's a great first step towards independence.

Lime Crescent

Just a 15-minute walk from campus, Lime Crescent offers students 24 self-contained flats - complete with their own separate kitchen and bathrooms. A large communal area gives students space for socialising and dining together, along with shared washer and drying facilities.

Live in Lime Crescent for
£96 per week

Crown Halls

In the heart of the campus, Crown Halls offers students two types of accommodation, both with the same excellent facilities and the added bonus of secure parking and an outdoor area for summer gatherings.

Two blocks of purpose-built flats provide accommodation for 42 students. Each block has 3 communal areas - one on each floor - offering a relaxing space for socialising and cooking together. As well as all cooking facilities, the communal areas are equipped with a washer and dryer and individual lockable storage cupboards.

All rooms incorporate a spacious bedroom with an en-suite shower room.

A further two town houses provide accommodation for 14 more students, offering the same communal facilities and spacious rooms but with a mix of en-suite rooms and those with a bathroom shared between two rooms.

Fully accessible rooms are also available within Crown Halls.

Live in Crown Halls for
£112 per week for an en-suite room
£105 per week for a room with a
shared bathroom

Titan House

Handy for shopping and local amenities and just a ten-minute walk from campus, Titan House provides accommodation for up to 44 students in a range of self-contained flats.

All with their own kitchen/living area and bathroom, flats at Titan House offer spacious student living in a range of sizes and layouts - from a standard with bedroom/living area to a large with a separate study room.

A large communal area is available on each floor, with washing and drying facilities as well as an area for communal dining and socialising.

Live in Titan House for
Large room £112 per week
Medium room £106 per week
Standard room £101 per week

Contact us

If you would like to find out more about our student accommodation, please visit [northernart.ac.uk/accommodation](https://www.northernart.ac.uk/accommodation) or contact the Student Services Team.

Student Services

01429 858410 (term time only)
or 01642 856125
HEstudentservices@northernart.ac.uk
or Disability@northernart.ac.uk

Opening Times

8.30am - 5.00pm - Monday to Thursday
8.30am - 4.30pm - Friday

The Northern School of Art

No 1 Church Street
Hartlepool
TS24 7DR

If you would like to find out more about Hartlepool as a place, please visit [destinationhartlepool.com](https://www.destinationhartlepool.com) where you will find out what's on and things to see and do.

The Northern School of Art
All Together Creative



   /TheNorthernArt


[northernart.ac.uk](https://www.northernart.ac.uk)
